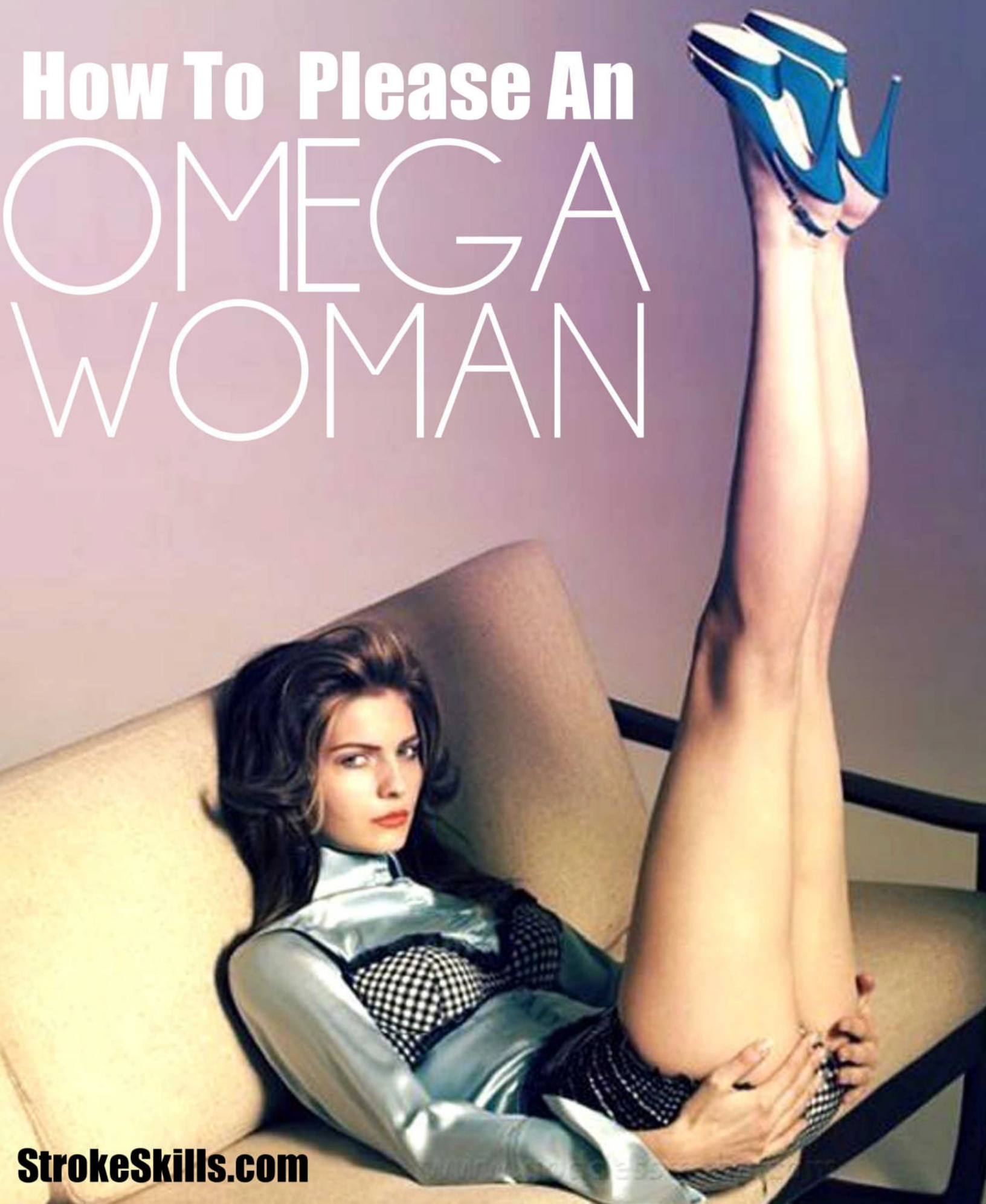


How To Please An OMEGA WOMAN



Our personality is important. It determines who we are, how we view the world, how we interact with the world and how we interact with others. Most people tend to think that personality types can be sorted out into two categories, alpha and beta. However, there is a third major personality type and that is omega personality.

Why is personality type important? The answer is simple, because it helps us to better understand how somebody is and how best to communicate with them. Dealing with somebody who is an alpha personality is vastly different from dealing with somebody who is a beta personality or an omega personality. With understanding, comes a better ability to communicate and while this is useful for your daily interactions with people it is vital for your communication with your partner or spouse.

Our personality is very connected to our sexuality as well. Knowing your partner's personality type will help you understand how to approach her in the bedroom and to give her what she wants and needs. Knowing what your partner's sexual needs are can help you fulfil them and that is why you need to know what your partner or spouse's personality type is, not just for better communication in the relationship but for a better sexual connection as well.

THE OMEGA FEMALE

Omega women were usually shy children that were probably more mature than their peers were. They were not attention seekers but they were friendly and approachable. They grow up to be women who are driven and ahead of the curve. They understand and love their feminine nature but do not play up on it overly much. They are a blend of function and style.

You will find that omega women tend to be smart and view the big picture of life. Instead of seeing a glass as half-full or half empty, they simply see a glass. They tend to generalize instead of categorize and are easy to get along with for the most part. They do not dwell overly on neither the past, nor the future and focus on the present.

They define their worth by their standing in the community and take pride in their jobs. They tend to choose jobs with a set schedule and will use their experience and skills to leverage for better jobs in the future. They strive to be an outstanding element in their homes or careers but without the need to be the very best that an alpha will have. They want to be outstanding but to get their on their own merits.

Quality of life is important to an omega female and they tend to be active with human rights movements and activism as a whole. They feel that everybody has the right to a good life and will fight for equality. They make excellent mediators and will often be the peacekeeper or mediator at home, work or with friends. They will work to end a conflict when one has been started.

Omega women are natural leaders but they retain their humility. They will rarely go against their morals or principles. They crave knowledge and order, which is another reason why they make great employees and leaders. They are informative without being preachy and they can be competitive at times. Omega women are direct in their communication and do not have the patience for somebody who is beating around the bush to get to the point.

The downside of an omega female as a spouse or partner is that they tend to nag. If they ask you to do something, they feel obligated to remind you until you do it. They also have very little tolerance for people who act stupid or lack common sense. They will argue their case until you can use facts to change their mind. They can be blunt and because of how they interact with others, they come off as snobby even though they are not.

Omega women can be very sensitive and possessive. They are quick to defend the people and things that they hold as being important to them; this includes a sensitivity to things said about people in their lives, things that they like or even causes and beliefs that they have. Often, due to personal trauma, an alpha woman turns into an omega personality type, this allows them to retain some of their alpha personality traits along with their omega personality traits. Omega women are more like alpha women than they are beta women in both their regular personality and their sexual identities.

The Omega Female's Sexual Personality

Their sexual personality can be somewhat submissive but they can have alpha sexual tendencies when in the bedroom. If you are having trouble getting a read on if your partner or spouse is an alpha or omega female, look towards their friendships, if she has friends who she calls friends, but does not fully allow them to get to know her, then she is most likely an omega female. Although some women are naturally omega personalities, many of them had personal trauma in their life that turned them into an omega and this makes it harder for them to forge true relationships. An omega woman will open themselves fully up to their spouse but not to the others and this makes them vulnerable to possessiveness and jealousy.



SEXUALITY AND THE OMEGA FEMALE

Omega women are explainers, they do not just state their opinion, and they expand upon it and explain it. This is good for you because you can ask them what they like in the bedroom and she will explain it to you fully. You will not have to guess what she likes because when asked, she will explain it specifically and if you do not get it right, they will correct you.

Omega women are always aware of how people perceive her and in how you perceive her. Omega women are polished outside of the bedroom but tend to enjoy unorthodox sexual activity. Many omega women do not understand their own sexuality; they know that they have sexual fantasies and urges that are what many might call dirty or raunchy and so they fail to explore these things, feeling that if they tell their partner, they might be judged. Unless asked specifically about fantasies, they may not tell you. It is vital for them to know that you will not judge them for anything that they like sexually. Many omega women are not even able to orgasm through intercourse because they have not fully explored the things that they know or suspect will arouse them, such as rougher sex.

The best strokes to use on an omega woman are the strokes that you can really put some power into; powerful strokes will allow her to orgasm through intercourse and to satisfy her need to really feel powerful and forceful strokes during sex. The reverse missionary, the missionary and the cross missionary strokes are all good strokes to use because it places you in a dominate position, which will arouse the omega female. Alternate your base strokes and u-strokes that will stretch her and give her the powerful motion and strokes that she needs to be brought to orgasm.

Let them know that their fantasies are not something that you will judge her on. She holds these fantasies very close to herself and you will need to show her that you can help her fulfil her sexual needs without her worrying that your perception of her will change.

Omega women love to feel sex, they like the power of the strokes and want to feel it. She wants you to be in control and you take control through your strokes. She is in control in all other areas of her life but in the bedroom, she wants to lose control and give the sexual reigns to you.

Stack up your strokes so you can alternate between powerful and soft, starting off with slow and forceful and then using your more vigorous strokes but choosing those that are powerful, strokes that she will be able to feel. Your strength will arouse her and bring her to orgasm. Light and soft strokes will not bring her to orgasm, neither will any stroke where she is the dominate position.